



506172733

**DIAMOND REPORT** **ELECTRONIC COPY**

**DIAMOND REPORT**



December 22, 2021  
 IGI Report Number 506172733  
 Description NATURAL DIAMOND  
 Shape and Cutting Style CUT CORNERED RECTANGULAR MODIFIED BRILLIANT  
 Measurements 15.07 x 10.90 x 7.36 mm

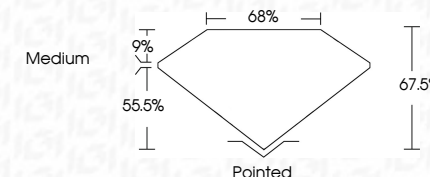
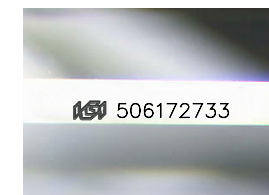
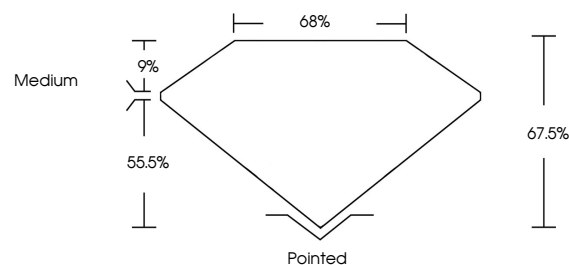
**GRADING RESULTS**  
 Carat Weight 10.08 CARATS  
 Color Grade J  
 Clarity Grade VS 2

December 22, 2021  
 IGI Report Number 506172733  
 Description NATURAL DIAMOND  
 Shape and Cutting Style CUT CORNERED RECTANGULAR MODIFIED BRILLIANT  
 Measurements 15.07 x 10.90 x 7.36 mm

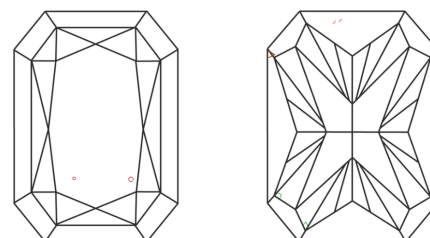
**GRADING RESULTS**  
 Carat Weight 10.08 CARATS  
 Color Grade J  
 Clarity Grade VS 2

**ADDITIONAL GRADING INFORMATION**  
 Polish - Symmetry VERY GOOD  
 Proportions VERY GOOD  
 Fluorescence SLIGHT  
 Inscription(s) IGI 506172733

**PROPORTIONS**



**CLARITY CHARACTERISTICS**



**KEY TO SYMBOLS**

Red symbols indicate internal characteristics.  
 Green symbols indicate external characteristics.

**COLOR**

D - F	G - J	K - M	N - R	S - Z	FANCY
Colorless	Near Colorless	Slightly Tinted	Very Light Color	Light Color	

**CLARITY**

IF	VVS <sup>1-2</sup>	VS <sup>1-2</sup>	SI <sup>1-2</sup>	I <sup>1-3</sup>
Internally Flawless	Very Very Slightly Included	Very Slightly Included	Slightly Included	Included

**ADDITIONAL GRADING INFORMATION**  
 Polish - Symmetry VERY GOOD  
 Proportions VERY GOOD  
 Fluorescence SLIGHT  
 Inscription(s) IGI 506172733



**IGI**

December 22, 2021  
 IGI Report No 506172733  
 NATURAL DIAMOND  
 CUT CORNERED RECT. MODIFIED BRILLIANT  
 15.07 x 10.90 x 7.36 mm  
 Carat Weight 10.08 CARATS  
 Color Grade J  
 Clarity Grade VS 2  
 Depth 67.5%  
 Table 68%  
 Grade Medium  
 Culet Pointed  
 Pol - Sym VERY GOOD  
 Proportions VERY GOOD  
 Fluorescence SLIGHT  
 Inscription(s) IGI 506172733